

**Important.** All wiring must conform to local building codes, regulations and laws. If the equipment is used in a manner not specified by the manufacturer, the protection provided by the equipment may be impaired.

1/2" Conduit  
18-20 AWG (24Vac Power)

24 AWG twisted pair, low cap, shielded, comms cable

Sensor A

Sensor B

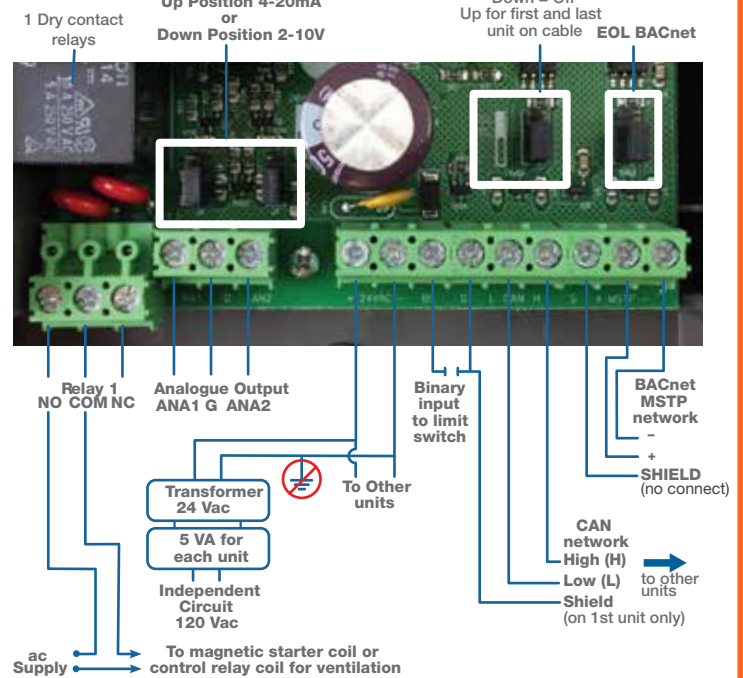
Mounting Holes

Path for wires

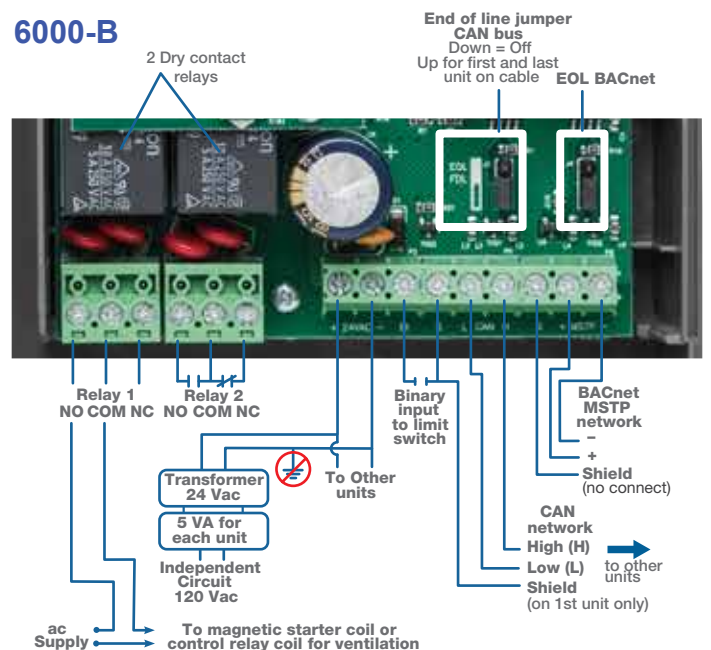
Notes:

- 1) Do not obstruct the monitor
- 2) Do not ground the 24 Vac
- 3) When using multiple monitors:
  - a) Maintain the same polarity (24 Vac) for all devices
  - b) CAN bus connection:
    - i) Maintain the same polarity (CAN bus) for all devices
    - ii) Use 24 AWG twisted pair, low cap, shielded, comms cable
    - iii) Monitors must be connected in series
    - iv) Switch end of line (EOL) jumpers (for first and last units)

### 6000-A



### 6000-B



### 6000-C

